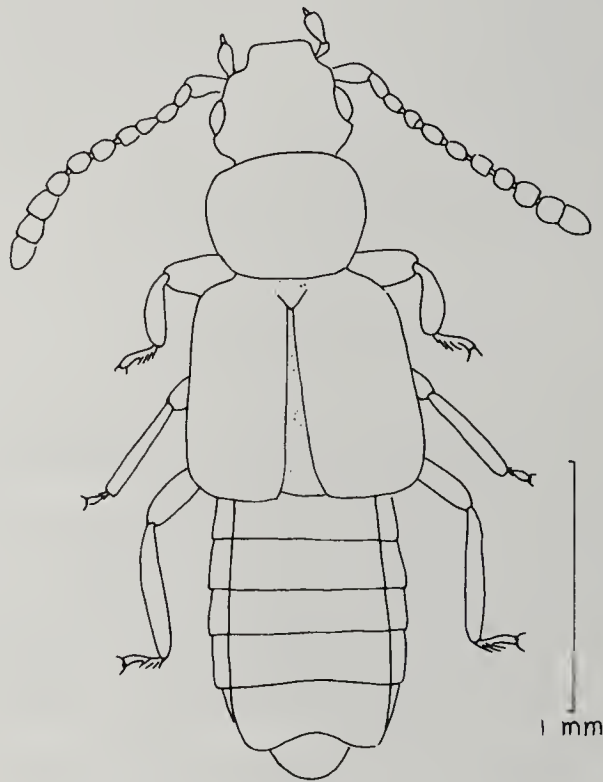


*TEROPALPUS LITHOCHARINUS* (LE CONTE), A SEASHORE SPECIES (COLEOPTERA: STAPHYLINIDAE)

IAN MOORE

Department of Entomology, University of California, Riverside, CA 92521

*Teropalpus lithocharinus* was described by LeConte (1877) in the genus *Trogophloeus* Mannerheim from "Puget Sound, M. G. Davidson". Casey (1889) stated about it, "Two specimens before me were taken by the writer in Marin Co., California". Hatch (1957) reported it under the generic name *Carpelimus* Leach from "Western Washington, rare". Herman (1970) removed the species to the genus *Teropalpus* Solier without adding further locality data. None of the above gave any mention of the habitat of the species.



*Teropalpus lithocharinus* (LeConte)

I have seen a specimen from the Fall collection (MCZ) labeled "Alameda Co., Cal.—as det. by Casey".

In addition, we now have two series of specimens from "CALIF., Marin Co., Bolinas, under driftwood on the beach, D. Giuliani collector", 19 specimens taken on 30 March, 1971, and 7 specimens taken on 11 December, 1971.

This definitely establishes the species as a seashore insect. Because of its distinctive appearance coupled with its habitat, the accompanying illustration should make identification easy when it is again encountered.

I am indebted to Alfred Newton of Harvard University for the loan of the specimen from the Fall collection.

LITERATURE CITED

- CASEY, T. L. 1889. A preliminary monograph of the genus *Trogophloeus*. Ann. New York Acad. Sci. 4:322-383.
- HATCH, M. H. 1957. The beetles of the Pacific Northwest. Part II. Staphyliniformia. Univ. Washington Publ. Biol. 16:i-x, 1-384, 37 pl.
- HERMAN, L. 1970. Phylogeny and reclassification of the genera of the rove beetle subfamily Oxytelinae of the world (Coleoptera: Staphylinidae). Bull. Amer. Mus. Nat. Hist. 142:343-454.
- LECONTE, J. L. 1877. On certain genera of Staphylinidae, Oxytelini, Piestidae, and Micropeplidae, as represented in the fauna of the United States. Trans. American Ent. Soc. 6:213-252.